



Faithfully Serving

LOS ANGELES

for 31 years

IMPACT REPORT | JULY 2024 - JUNE 2025

CONTENTS

- 6** Pillars of Transformation
- 10** The LA Wildfires
- 14** Faithfully Serving
- 18** Outreach Programs
- 22** Food Programs
- 26** Residential Programs
- 30** Recovery Programs






Building the DREAM

Founded in 1994, the Dream Center began with a simple mission: to serve as a beacon of hope in Los Angeles. What began as a small outreach has grown into a vibrant resource center that has touched millions of lives. For 31 years, the Dream Center has faithfully served the city, walking alongside those facing homelessness, hunger, poverty, addiction, and abuse.

Through residential and community programs, we provide immediate relief, long-term care, and the tools to rebuild. Layer by layer, lives are restored, renewed, and empowered to dream again.

**Restoring hope. Rebuilding lives.
Renewing Los Angeles.**

The background of the entire page is a low-angle photograph looking up at several palm trees. The trees are dark silhouettes against a sky filled with soft, wispy clouds. The sky has a warm, orange-pink glow from the setting or rising sun, transitioning into a lighter blue at the top. The palm fronds are detailed and spread out, creating a sense of height and reaching towards the sky.

The Los Angeles Dream Center is a faith-based non-profit organization located in Echo Park, dedicated to empowering lives and underserved communities in the city of Los Angeles. By offering residential, outreach, and resource programs to individuals, families, and communities in the areas of homelessness, hunger, poverty, addiction, domestic violence, and education, the Dream Center is committed to enabling immediate relief and long-term transformation.

MISSION

VISION

The Dream Center envisions for every person to have the opportunity to live their God-given dream.



In 1994, Tommy Barnett and son, Matthew Barnett, founded the Dream Center, a non-profit organization dedicated to the mission of transforming the lives and communities of Los Angeles. Since then, the Los Angeles Dream Center has served up to 45,000 people a month through various transitional housing, resource and outreach programs made available free of charge. These programs are all dedicated to providing opportunities to make a difference in the lives of countless people in need.



Pastor

Tommy Barnett | Chairman
Co-founder of the Dream Center
Co-Pastor of Dream City Church



Pastors

Matthew Barnett | President
Caroline Barnett | Vice President
Co-founders of the Dream Center
Pastors of Angelus Temple

BOARD OF DIRECTORS

JULY 2024 - JUNE 2025

CO-FOUNDER

Pastor Tommy Barnett | Chairman

Co-Pastor, *Dream City Church*; Founder, *Phoenix Dream Center*;
Co-founder, *Los Angeles Dream Center*

OFFICERS

Pastor Caroline Barnett | Vice President

Co-founder, *Dream Center Foundation*

David Oddo | Treasurer

President, *Pinnacle Precision Sheet Metal Corporation*;
President, *Corsair Management, Board of Trustees*,
Vanguard University

DIRECTORS

Tim Hunt

Co-founder & President, *Huntwood Industries*

Resa Hunt

Co-founder & Vice President, *Huntwood Industries*

Mike Rogers

Founder & Owner, *Rogers Consulting Ltd.*

Pastor Charles Nieman

Pastor & Founder, *Abundant Living Faith Center*

Rodney Jerkins

Record Producer

Joy Enriquez

Singer & Actress

Restoration
& Transformation



Food & Essential
Resources



Empowerment
through Education



Community
Engagement



Pillars of TRANSFORMATION

WE GET TO SERVE
WE GET TO SERVE
WE GET TO SERVE
WE GET TO SERVE
WE GET TO SERVE
WE GET TO SERVE
WE GET TO SERVE



THE LA WILDFIRES

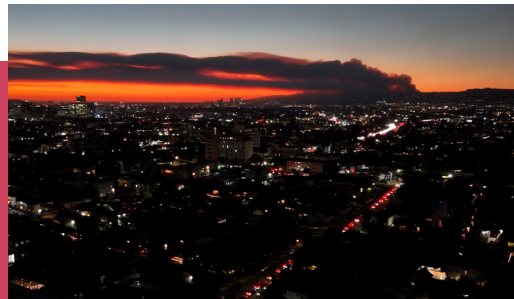
& OUR DISASTER RELIEF EFFORTS

JANUARY 2025

In January 2025, Los Angeles endured one of the most devastating wildfire seasons in its history. The Palisades Fire tore through 23,448 acres, while the Eaton Fire consumed 14,021 acres, together ranking among California's most destructive wildfires. Fueled by relentless Santa Ana winds and prolonged drought, these **fires destroyed over 16,000 homes and businesses** across Pacific Palisades, Malibu, Altadena, and Pasadena. Over **100,000 people were forced to evacuate**, and tragically **claimed 29 lives**.

Because of **31 years of faithfully serving Los Angeles**, the Dream Center was in a unique position to respond immediately to this crisis. Our established infrastructure, deep community roots, and a strong network of volunteers enabled us to quickly deliver emergency relief, providing food, emergency shelter, supplies, and spiritual care when they were needed most.

This is what faithful presence in a city looks like.



OUR

Disaster Relief

2,000,000 POUNDS OF PRODUCT

distributed through our Disaster Relief Car Line & Walk-Up Outdoor Pantry.

Emergency Shelter

61 DISPLACED FAMILIES & INDIVIDUALS

housed safely in our emergency shelter.

Car Line Distribution

22,000 CARS & **90,000** PEOPLE

received food, hygiene products, diapers, & essential resources.

\$8.5 MILLION RETAIL VALUE

of items distributed through the car line.

Resource Center

OVER 1,500 PEOPLE

provided with clothing, shoes, air purifiers & household essentials.



IMPACT

DISASTER RELIEF





STEPHEN & LINDA TAVANI | Relief Recipients

After losing their home to the fire, our team sifted through the ashes and provided a relief check of \$10,000 from the Tony Robbins Foundation to support their recovery.

“

What the Dream Center does is go into the ashes of society and find treasures, people who may have even given up on themselves. It's dangerous and it's hard, but they go anyway. We lost everything, wedding dresses, her platinum records, our kids' photos, but when they came to sift through our ashes with us, it meant the world.

They brought us hope after the fires. That's what the Dream Center does, it rebuilds people and brings them back together.

”



Volunteers

OVER 10,000 INDIVIDUALS

mobilized to provide relief, resources & hope in the midst of disaster.

Ash Outs

54 Families

supported as our teams sifted through fire-damaged homes to help families recover valuables lost in the devastation.

Financial Assistance

\$1,065,000 IN DIRECT FUNDS

given to families affected by the fires through an incredible donation from the Tony Robbins Foundation.

\$300,000 IN GIFT CARDS

given to over 400 individuals through Americares.

Total Impact

OVER 115,000 INDIVIDUALS

served through our disaster relief efforts.

OVER \$9,365,000 VALUE

of product, gifts cards, & direct financial assistance distributed.

In a city where nearly one in four residents faces food insecurity, and where fulfilling a child's dreams or allowing families to simply survive, depends on timely care, progress matters but the need remains great. The Dream Center understands that behind every statistic is a face, a family and a story.



Faithfully SERVING

Renewing Hope, Rebuilding Lives, and Restoring LA.



For the first time in recent history, homelessness in Los Angeles has declined for two years in a row. As of 2025, the Greater Los Angeles Homeless Count reports that

72,306 people

experienced **homelessness** in the county. This number has dropped down 4% from 2024.



About 70% of unhoused individuals in Los Angeles live outdoors in tents, vehicles, or makeshift shelters. Overdose, most often from fentanyl, remains the leading cause of death. Though rates have leveled recently, the risk is still extremely high.

While this signals a hopeful shift, the crisis still remains.

Transformation begins **WITH PEOPLE**



At the Dream Center, we believe true transformation starts when someone's potential is seen and nurtured. That is why, for over three decades, we've stood beside our neighbors through emergency relief and basic needs, transitional housing that heals mind, body, and spirit, and outreach that bridges people from the streets to opportunity.

In a city where homelessness has finally begun to recede, where overdose deaths have begun to decline, we continue to faithfully serve, not to merely shift numbers, but to restore lives, one person at a time.





FOR 31 YEARS,

the Dream Center has faithfully served communities across Los Angeles, building trust and relationships within a 19-mile radius of our campus.

Through neighborhood beautification projects, children's programs, and compassionate outreach to the unhoused, youth, and incarcerated, we meet people right where they are with dignity and hope.

OUTREACH PROGRAMS

Reaching more than 20 underserved communities each week, outreach programs offer food, clothing, furniture, street clean-up and children's programs, all free of charge.

Staff and volunteers continue to build strong relationships within these neighborhoods, equipping individuals and families for long-term sustainability.



These connections often open the door to deeper transformation, as many of those we encounter through outreach take their next step into our transitional housing programs to find stability, healing, and the opportunity to pursue their God-given dreams.



OUR

Adopt-A-Block

41,638 INDIVIDUALS SERVED

by fostering relationships in underserved communities through door-to-door visits.

Dream Kids

2,674 KIDS IMPACTED

where they can enjoy games, listen to gospel messages, and build meaningful community.

Homeless Outreach

14,423 UNHOUSED INDIVIDUALS

reached and ministered to through Union Park, Skid Row and MacArthur Park.

Prison Outreach

8,962 INMATES MINISTERED

and counseled to through weekly Bible studies, chapel services, classes, and over 12,000 donated books a year.

IMPACT

OUTREACH ESSENTIALS

Access to other resources like clothing is essential to not only the overall well-being of a person but for job interviews, appointments and everyday use.

Clothing Outreach

417,358 ITEMS DISTRIBUTED

59,622 INDIVIDUALS SERVED



Many families who struggle to make ends meet often face the challenges of being able to afford household items like furniture. Such obstacles can put families at risk of being separated due to poverty.

Organizations like Para Los Niños, the Children's Institute, Olive Crest, and the Department of Children and Family Services (DCFS) work with the Dream Center to identify at-risk families.

Foster Care Intervention

614 ITEMS PROVIDED
(furniture & other essential items)

56 FAMILIES SERVED

27 FAMILIES AVOIDED SEPARATION

11 FAMILIES REUNITED

35 FAMILIES ASSISTED IN CLOSING
THEIR CASES WITH DCFS



Providing **RELIEF**

Outdoor Food Pantry

During Disaster Relief, our Indoor Food Pantry was paused while we focused on the car line for the month of January. Our Disaster Relief Car Line then became a Walk-Up line, which was then transformed into our current Outdoor Food Pantry.

32K

people served through the food pantry

432K

pounds of food distributed



FOOD PROGRAMS

The Dream Center's essential onsite and offsite programs and services continue to relieve thousands of individuals in dire need who depend on these vital resources.

The rising cost of living in Los Angeles has left countless families without stable housing, affordable food, and other necessities. For families already battling homelessness, poverty, or addiction, these rising costs create impossible choices between groceries, rent, and basic survival.



Food insecurity remains especially high, with **1 out of 4 people** in L.A. County struggling to access enough to eat.



Food Ministry Team

OUR

This is why the Dream Center has remained committed to faithfully serving LA. Every meal we provide helps carry the burden and reminds people they are not forgotten. Last year, through our food programs, we were able to provide:

Food Bank

8,726,435 POUNDS OF FOOD

provided to Dream Center programs and to 16 other organizations.

DC Diner

283,198 MEALS SERVED

to individuals and families in need.

Mobile Food Banks

238,870 INDIVIDUALS SERVED

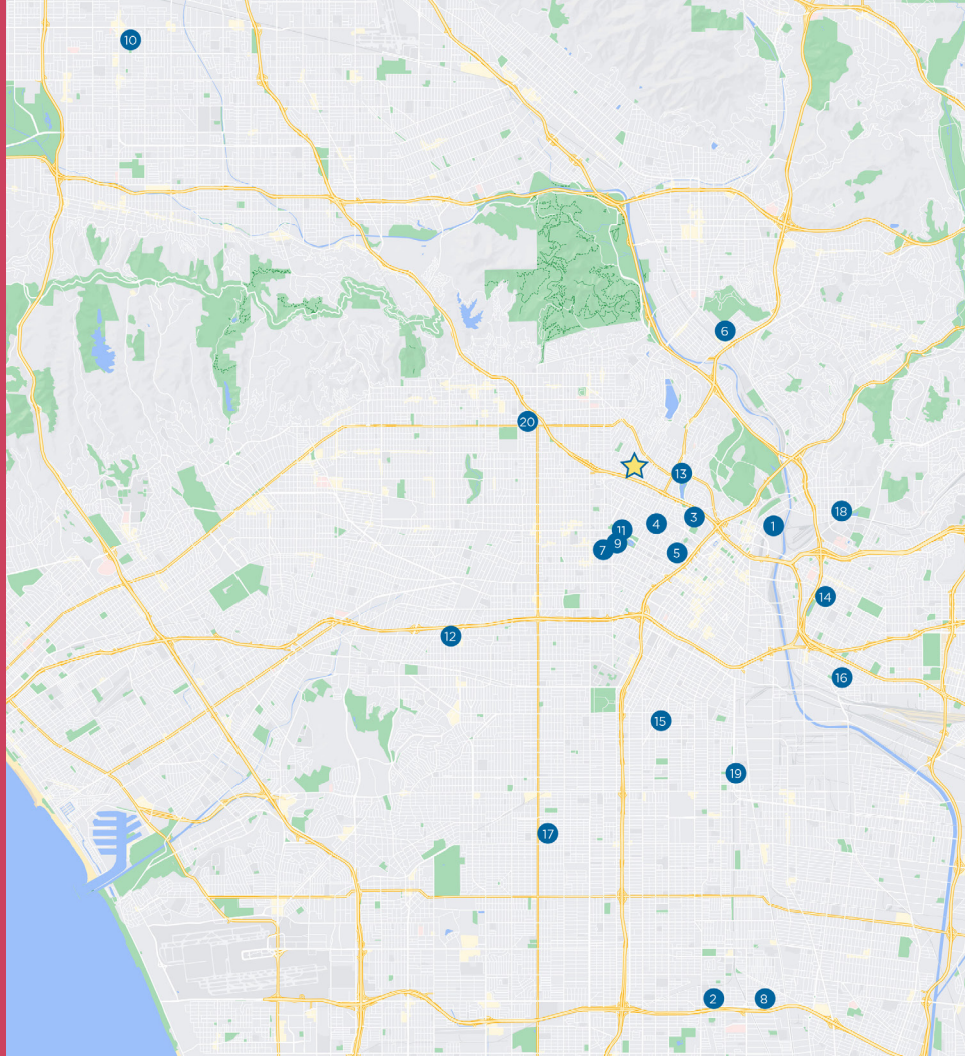
visiting 22 sites with more than 900 total visits.

IMPACT

MOBILE FOOD TRUCK LOCATIONS

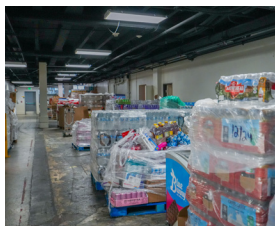
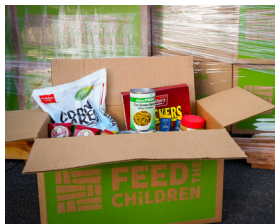
1. 293 Cardinal Street
2. 11335 Success Avenue
3. 353 East Edgeware Road
4. 273 Bonnie Brae
5. 1337 West 5th Street
6. 3135 Drew Street
7. James M Wood Blvd
8. 2250 East 114th Street
9. 670 South Park View Street
10. 14300 Sherman Way, Van Nuys
11. 645 South Park View Street
12. 4409 West Adams Boulevard
13. 1100 Glendale Boulevard
14. 205 South Chicago Street
15. 430 East 41st Place
16. 3203 Glenn Avenue
17. 6908 South Western Avenue
18. 3457 North Mission Road
19. 1714 East 54th Street
20. 5545 Virginia Avenue

★ **Dream Center Campus**
2301 Bellevue Ave



Feeding LA Together

Partners like Food Forward, Convoy of Hope, Golden West Food Group, Frito Lay, COPE, and Feed the Children contribute to thousands of pounds of produce, protein, packaged foods and more every year.



FOOD BANK | TESTIMONIAL



Carey Watkins | Food Bank Beneficiaries
Freedom of Spirit Outreach Church

“

We've been coming here ever since the Dream Center opened up, since before it was at the Queen of Angels Hospital. It's been a long time. We give away food and we reach out to the homeless, about 50 a day.

”

RESIDENTIAL PROGRAMS

Hope begins with home. For many unhoused individuals and families in Los Angeles, the challenge goes far beyond instability, it also includes trauma, hardship, and the struggle to simply survive. Transitional housing at the Dream Center provides more than just a roof; it offers time, care, and the tools needed to rebuild for lasting stability.

By combining compassionate care with innovative tools, we are faithfully serving LA's most vulnerable with housing, healing, and hope for a brighter future.





OUR

These programs are available for families, men and women veterans, and foster youth who have emancipated.



Families

95 FAMILIES HOUSED

Single family units

Veterans

16 VETERANS HOUSED

Men and women adults 18+



Emancipated Youth

19 INDIVIDUALS HOUSED

Young adults 18-24

IMPACT

EDUCATION PROGRAMS

Education is a foundation for lasting transformation. Many who come to the Dream Center have faced barriers that prevented them from completing school or learning essential life skills. This year, we expanded learning opportunities with brand-new classes, enhanced therapy access, and reworked curriculum that connects homework with Bible readings, sermon notes, and goal-setting.

We helped students reflect on their growth in relationships with themselves, others, and God. Fitness offerings have grown as well, with new cardio equipment and peer-led gym sessions to help students grow mind, body, and spirit.





OUR

In the past year, the Adult Education Department faithfully served the community through classes, workshops, and tutoring. Among these learners, **7 *students*** proudly earned their GEDs, equipping them to step forward into new possibilities with confidence and hope.

Adult Education

781 INDIVIDUALS SERVED

through classes, workshops and tutoring.

7 GED GRADUATES

IMPACT

RECOVERY PROGRAMS

*Faithfully
Restoring Lives*

A group of diverse people, including men and women of various ages and ethnicities, are standing in a line in a hallway. They are all clapping their hands, suggesting a celebratory or supportive event. The hallway has white walls and a polished wooden floor. The lighting is bright and even.

Road to **RECOVERY**

In Los Angeles, the recovery journey often begins with hope meeting opportunity and faith meeting care. Public health data shows that people experiencing homelessness face disproportionately high rates of chronic illness, trauma, and co-occurring mental health and substance-use disorders. In 2024, nearly 2,500 unhoused people in L.A. County lost their lives, with 45% of those deaths resulting from drug overdoses, a stark reminder that the need for compassionate, holistic recovery services has never been greater.



RACHEL | RECOVERY PROGRAM GRADUATE

Rachel is currently in Connections, our second year recovery program.

“

If it weren't for the Dream Center, I would be dead. I grew up in a chaotic childhood, I didn't know 'safe' or 'structure.' I started drinking and doing drugs at a young age that just got worse as I got older. Eventually I got into prostitution and went to jail. I never knew home. I slept underneath bridges, bus stops, and homeless shelters.

The Dream Center is the first place that I've had a home. This has been a safe haven for me to rest and to heal.

”

RECOVERY PROGRAMS

At the Dream Center, we've stood alongside individuals on this path for decades, providing a safe place, structure, and a supportive community essential to healing. Our recovery programs offer far more than shelter: they include counseling, education, mentorship, job training, and emotional and spiritual support, creating a foundation where a life once focused on survival can begin to truly flourish.

These programs are structured to support residents through each phase of their journey, from a disciplined, supervised start towards building independent stability. At every step, we remain faithful in offering care that honors the whole person, ensuring recovery is not just possible, but sustainable.



1st Year Discipleship

144 INDIVIDUALS HOUSED

in our first-year recovery program

2nd Year Connections

51 INDIVIDUALS HOUSED

in our second-year recovery program

3rd Year Transitions

91 INDIVIDUALS HOUSED

in our transitional program

102 TOTAL GRADUATES

BACK-TO-SCHOOL BASH

In partnership with Kershaw's Challenge and the Los Angeles Dodgers Foundation, the Annual Back-to-School Bash was hosted by the Dream Center on July 19, 2025 distributing **3,000 backpacks**. Festivities included carnival games, water slides, ice cream and much more.



Faithful HOPE

By faithfully serving alongside community partners, local businesses, and dedicated supporters, the Dream Center is able to host impactful events that uplift neighborhoods, strengthen relationships, and provide meaningful resources. These gatherings not only meet immediate needs but also create spaces where dignity, hope, and transformation can take root.



This holiday season, Shawn Meaie and his team at Family First Life continued their tradition of generosity by sponsoring the Annual Christmas Dreamland. In a year when inflation challenged so many families, their support helped bring joy to children across Los Angeles. Together, we distributed **9,300 toys** and hosted a festive Christmas carnival, ensuring that countless families experienced the warmth, celebration, and hope of the season.

World Vision, Planet Hope Foundation and AM570 LA Sports helped make this event possible.

CHRISTMAS DREAMLAND

Faithfully Serving COMMUNITY

Students, missionaries, and church teams from across the globe continue to travel to Los Angeles to serve. Their experiences not only impact our local communities but also equip them to return home ready to lead and serve in their own neighborhoods.



Those who come to Los Angeles to serve bring hope to underserved neighborhoods and play a key role in the transformation of residents in our Transitional Housing programs.

DREAM CENTER LEADERSHIP SCHOOL

Since 2005, the Dream Center Leadership School (DCLS) has empowered gospel-centered leaders who shape culture and bring lasting change. Designed for young adults ages 18–25, this experience equips students to grow in confidence, discover their gifts and talents, and more.

Dream Center Leadership School | Immersion
1,868 STUDENTS GRADUATED
to date.

DCLS STUDENT | TESTIMONIAL

“

I chose DCLS because I wanted more of a hands-on experience and to grow in my faith. DCLS offered more than just a classroom experience. We get to serve. We get to experience God's community in a different way. This place brings you very different opportunities that you can apply within your life.



You don't just learn about ministry here. You do it. And it changes you.

”

Jaciel Carrillo | 2nd Year Student

Visit dcls@dreamcenter.org for more information on DCLS.

IMMERSION PROGRAM

The Dream Center Immersion Experience is a three to six month experience available to individuals who are 21 and older with a heart to serve. It is aimed to empower individuals to take their experience and training across the world to plant churches, ministries, and reach more people in need.

For more information contact
immersion@dreamcenter.org



SHORT TERM MISSIONS

Short Term Missions (STM) is designed for individuals, churches, ministries, and other volunteer groups and organizations to experience all the outreach programs available through the Dream Center while staying onsite for up to two weeks.

Short Term Missions

2,672 VOLUNTEERS

from over 229 organizations

Visit **www.thedcnetwork.org** for more information

DREAM CENTER NETWORK

Inspired by the Dream Center's mission, many pastors and community leaders have built Dream Centers in their own cities to meet specific community needs. The Dream Center Network continues to break ground each year, reaching thousands of people across the globe.

DC Network

75 DREAM CENTERS

around the world, including centers in

29 STATES AND
11 COUNTRIES

Visit **www.thedcnetwork.org** for more information on the Dream Center Network.



VOLUNTEER

For nearly three decades, the Dream Center has thrived because of the heart and commitment of volunteers. By joining hands with missionaries, corporations, churches, organizations, schools, and compassionate individuals, we are able to extend our reach beyond Los Angeles and meet needs in ways no single person could accomplish alone.

Contact **volunteers@dreamcenter.org** for more information on available opportunities.

CORPORATE PARTNERSHIPS & IN-KIND DONATIONS

Through in-kind donations, businesses and organizations can make an impact. Partners include World Vision, Crate&Barrel, Baby2Baby, and many more.

To find out how your contributions can change lives, visit dreamcenter.org/partner-with-us.



Ways
to Partner

ADOPT A BED

Adopting a bed at \$625 a month provides more than a safe place to sleep, but a place to rebuild for a brighter future. To recognize the opportunity for life change, a personalized plaque is placed on the sponsored bed. In addition, program beneficiaries send a personal note of appreciation.



Through these partnerships, **client beneficiares are able to:**

RECEIVE



Food and clothing



Shelter



Hygiene products



Other necessities
and essentials



Education/Career



Life Skills



Financial
Management Skills



Trauma and
Addiction Recovery

ACHIEVE



Restored
Relationships



Family Foundations



Identity In Christ

You Made a Difference

We thank every friend, corporation, church, organization, volunteer, supporter, and staff who have come alongside us believing that change is possible.

Dream Center & Dream Center Foundation are registered 501 (c)(3).

DC Tax ID 95-1803686

DCF Tax ID 41-2269686

An audited annual financial report is available upon request.





CONTACT US

*If you are interested in providing financial support
or partnering with the Dream Center,
please contact:*

Justin High | Director of Development
213-273-7017 | jhigh@dreamcenter.org

or scan the QR code to learn more:



THANK YOU



213.273.7100 | dreamcenter.org | [f](#) [X](#) [@](#) [@Ladreamcenter](#)
2301 Bellevue Ave. Los Angeles, CA 90026